



TWINSBURG

CITY SCHOOL DISTRICT

BOND LEVY

ELECTION DATE:
MAY 6, 2025

A Community Guided Plan for the Future

- **Collaboration with stakeholders** began in 2016
- Developed through **years of planning and community engagement**
- Focused on addressing **aging facilities and modernizing educational spaces**



Incorporating Community Feedback

- Modified plans to **address our community members' concerns** about the original plan:
 - Traffic on Ravenna Road
 - Stadium relocation and impact on surrounding neighborhood



Incorporating Community Feedback

- Modified plans to **address our community members' concerns** about the original plan:
 - Environmental concerns on the Dodge campus
 - Adequate parking at the new PK-6 elementary school campus
 - Cost of project



Incorporating Community Feedback

- Focused on **long-term solutions** for educational and athletic needs.



Why Now?

Aging Buildings

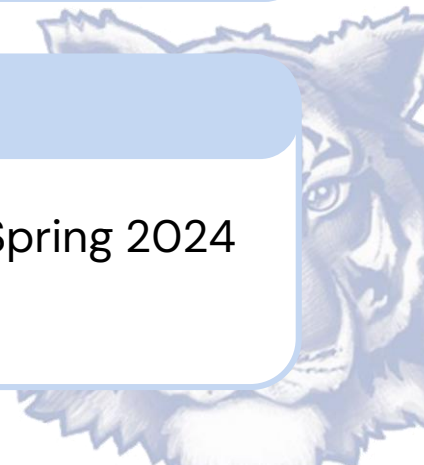
Four schools need renovations costing 66% or more of new construction

Rising Costs

Increasing prices for labor and materials

Athletic Facilities

- Emergency repairs made to the track at **Tiger Stadium** in Spring 2024 with additional repairs scheduled for Spring 2025
- Turf nearing the end of its lifespan



Ohio Facilities Construction Commission

The OFCC oversees capital projects undertaken by state agencies and state-supported institutions of higher education.

The Expedited Local Partnership Program (ELPP) is designed to give Districts not yet participating in the Classroom Facilities Assistance Program the opportunity to move ahead with portions of the project. The program allows school districts to pass a resolution requesting to enter ELPP. The Commission then performs an assessment of the District's facilities and enters into an agreement with the District on a Facility Master Plan that covers the entire needs of the District. The District then chooses a "distinct portion" of their Master Plan to fund through local efforts.

When the District's turn later arises in the Classroom Facilities Assistance Program, the money spent by the District on the distinct portion is credited against the local share of the entire Master Plan projects. Districts wishing to participate in ELPP must submit both the Program Application and the Resolution to Participate.

You can learn more about this program here: <https://ofcc.ohio.gov/our-programs/k-12-schools/programs/expedited-local-partnership-program-elpp>



Ohio Facilities Construction Commission



Twinsburg
City School District

Currently eligible
for a **17% match**
from the State of
Ohio on a capital
building project



Renovate vs. Replace/Existing Schools

| Building | Renovation Cost | Replacement Cost | % Threshold |
|----------------------------|-----------------|------------------|-------------|
| Wilcox PK-1 Primary | \$31,222,852 | \$33,725,930 | 93% |
| Bissell 2-3 Elementary | \$23,464,850 | \$29,059,168 | 81% |
| Dodge 4-6 Intermediate | \$42,635,349 | \$47,187,263 | 90% |
| RB Chamberlin 7-8 Middle | \$41,904,071 | \$47,545,522 | 88% |
| Twinsburg High School 9-12 | \$48,433,864 | \$138,301,865 | 36% |
| TOTAL | \$187,660,986 | \$295,819,748 | |

Construction of a New PK-6 Elementary School

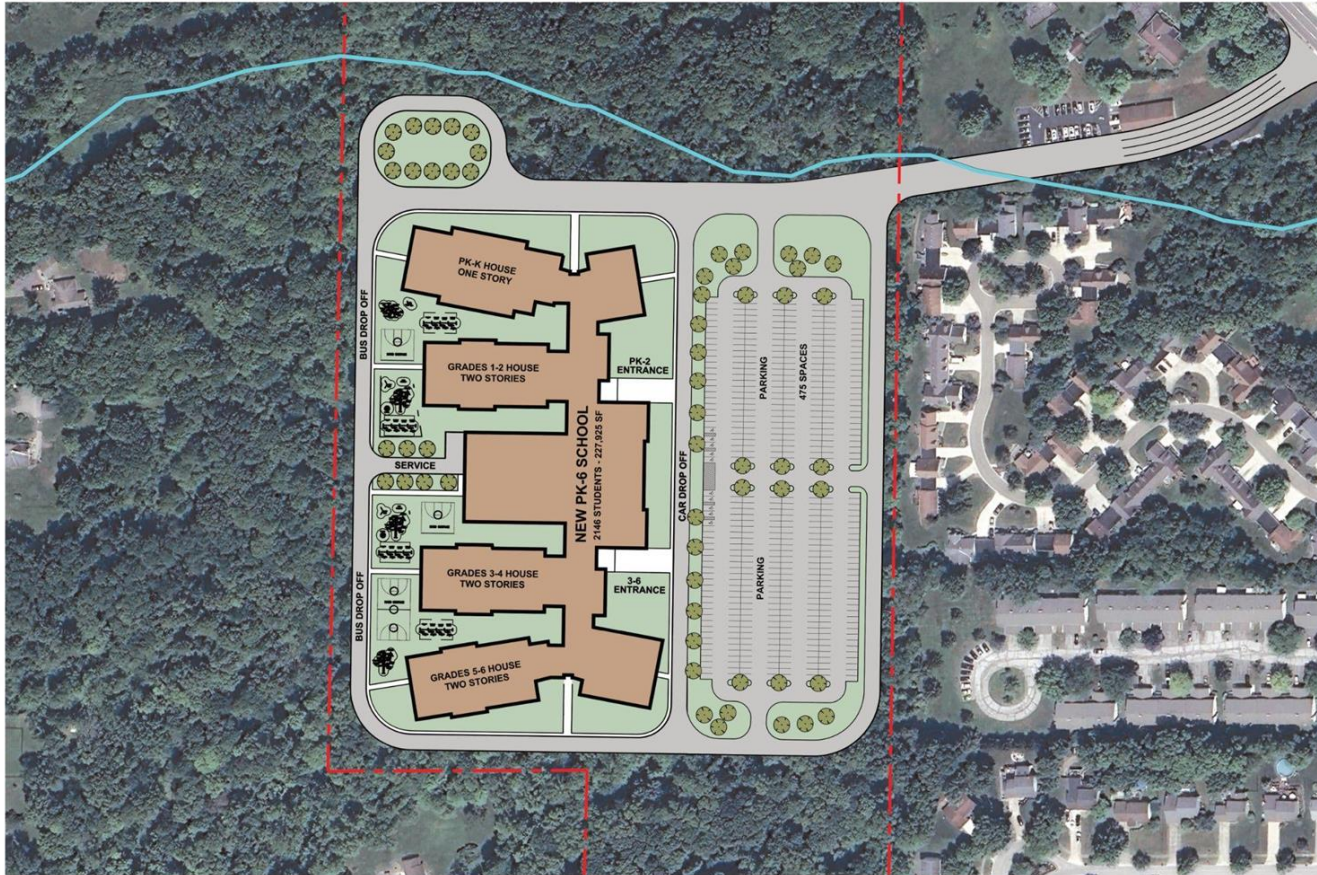
- Replaces Wilcox Primary School, Samuel Bissell Elementary School, and George G. Dodge Intermediate School
- Modern, consolidated facility with state-of-the-art resources, including security enhancements, for young learners



Construction of a New PK–6 Elementary School

- **City/School District “Win-Win”:** To be built through a property swap with the City of Twinsburg, exchanging the Dodge campus property with City-owned property located between Ravenna and Chamberlin Roads—a collaborative solution benefiting the District and the community



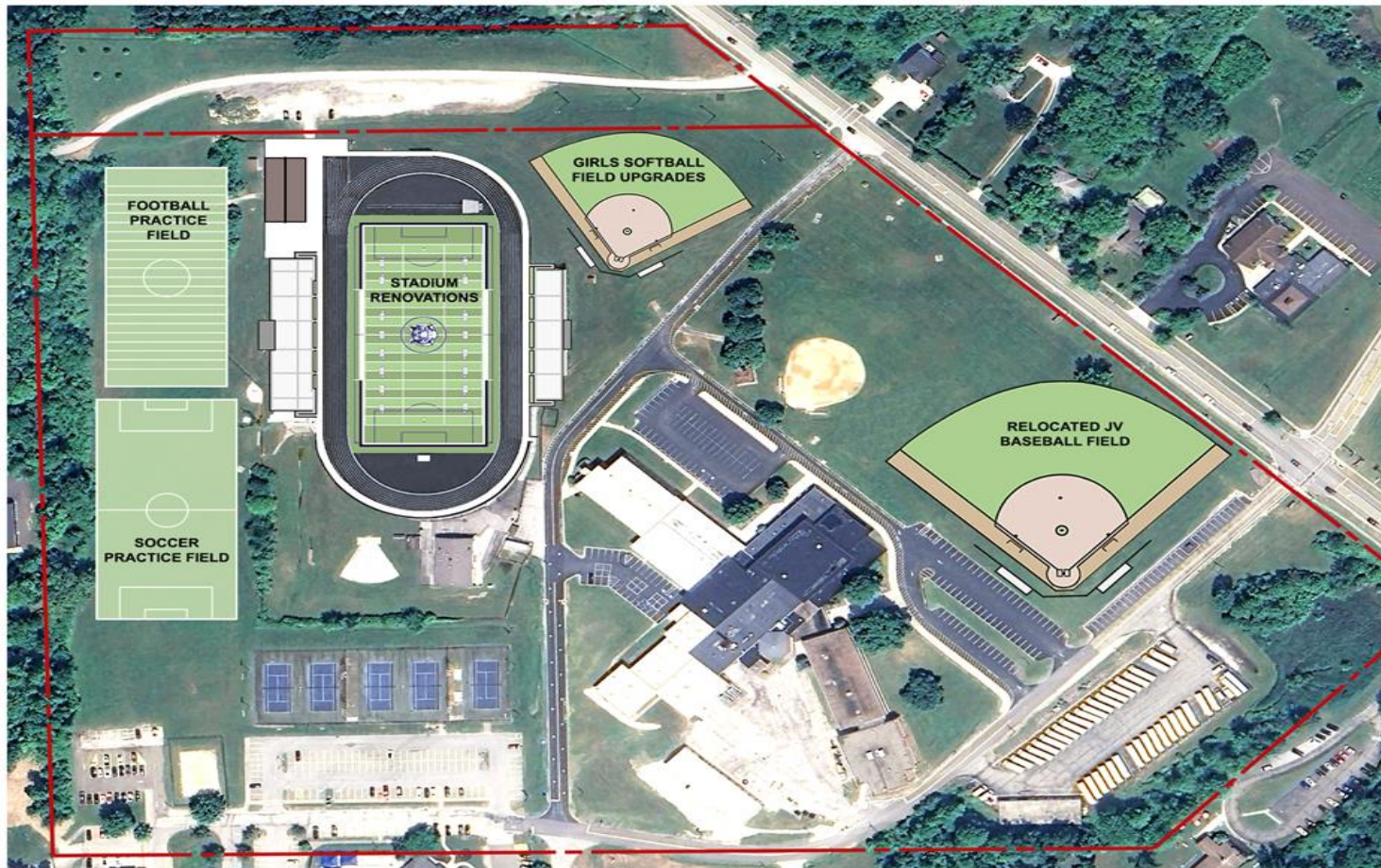


NEW PK-6 SCHOOL
TWINSBURG CITY SCHOOL DISTRICT



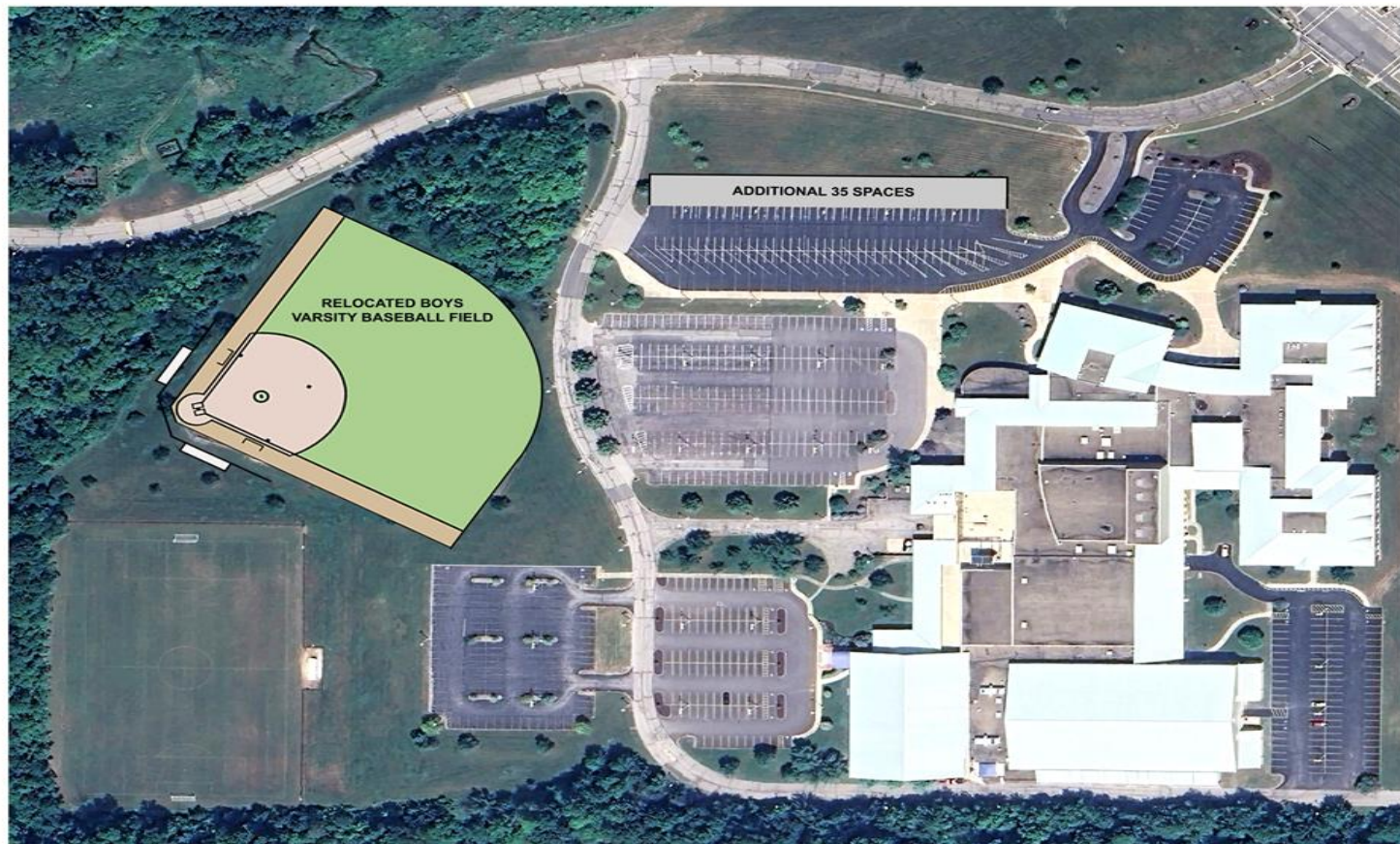
CORDOGAN CLARK LESKO
ARCHITECTURE • ENGINEERING • CONSTRUCTION





**STADIUM RENOVATIONS/GIRLS SOFTBALL FIELD UPGRADES/
RELOCATED JV BASEBALL FIELD/FOOTBALL & SOCCER PRACTICE FIELDS**
TWINSBURG CITY SCHOOL DISTRICT JANUARY 30, 2025





**RELOCATED VARSITY BASEBALL FIELD AND
ADDITIONAL PARKING**
TWINSBURG CITY SCHOOL DISTRICT FEBRUARY 11, 2025



Samuel Bissell Nature Park

- Multiple access points for community
- Field trip accessible
- Trails
- Meadows
- Native plants/flowers
- Insect studies (insect hotels)
- Tree studies
- Bird watching (overlook tower)
- Trail cams
- Weather station
- Agricultural raised gardens
- Exploratory station
- Activity area
- Pavilion - class seating
- Picnic area
- Art area
- Storage
- Amphitheatre
- Pop up ice rink
- Amenities - porta potty, water, electricity



It promotes:

- Mental alertness
- Lowers stress and anxiety
- Boosts self discipline
- Positive effects on mood and motivation
- Physical activity, fitness, and wellness
- Cooperation
- Attention, focus and engagement
- A sense of calm
- Creativity
- Critical thinking
- Problem solving
- An improved academic performance
- A reduction in anger and disruptive behavior
- Positive relationship skills
- Cognitive development
- Reduction in impulsivity
- Independence
- A life long appreciation for our connection to the natural world and its conservation

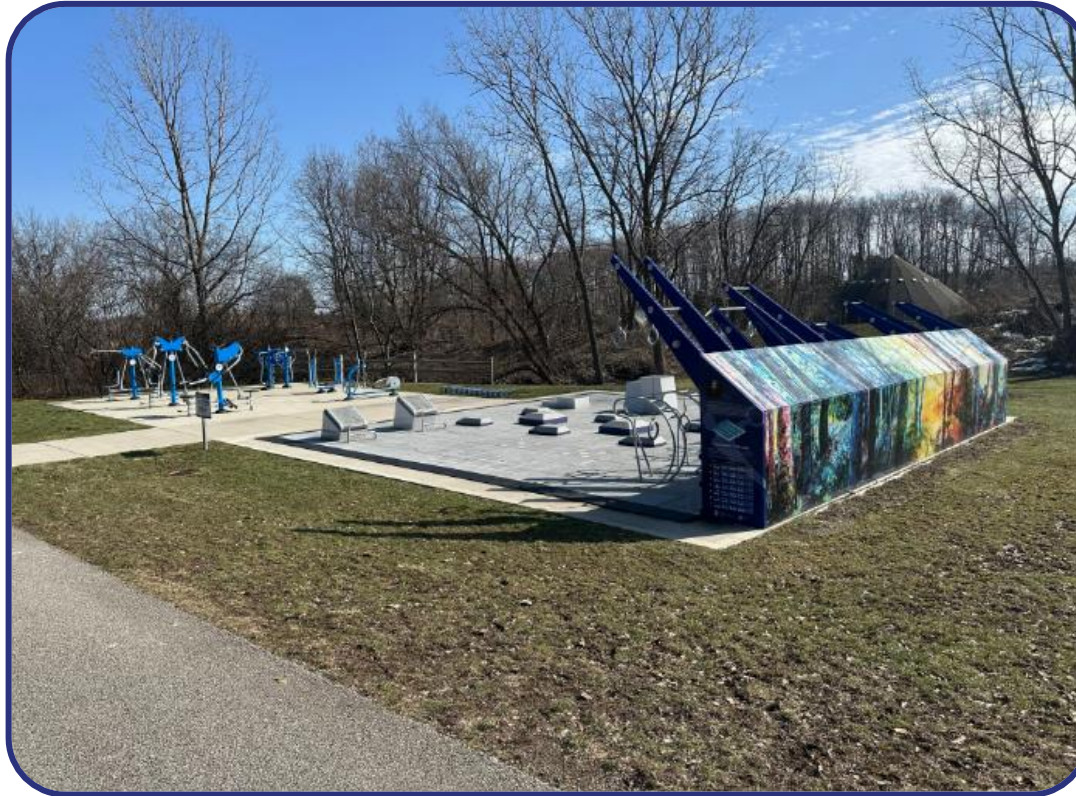
Wilcox Fitness Court Studio, A Multi-Generational Use Park



Wilcox Fitness Court Studio, A Multi-Generational Use Park



Wilcox Fitness Court Studio, A Multi-Generational Use Park

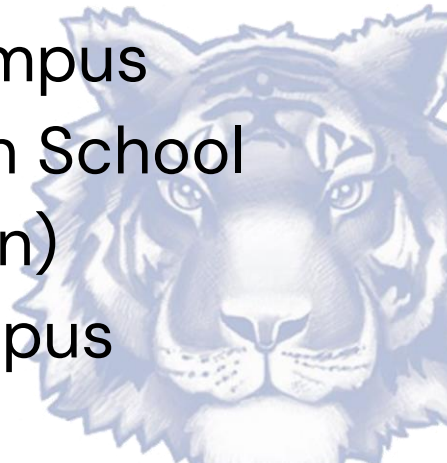


Wilcox Fitness Court Studio, A Multi-Generational Use Park



Athletic Facility Updates and Relocations

- Renovation of **Tiger Stadium** and **Hoon Softball Field** at their current sites
- Relocation of:
 - JV/9th Grade Baseball Field → RBC Campus
 - Varsity Baseball Field → Twinsburg High School Campus (current JV/9th Grade location)
 - Girls' Practice Soccer Field → RBC Campus



Example of Multi-Grade Level School

Brecksville-Broadview Heights PK-5 Elementary School
& Blossom Field House:

https://vimeo.com/750114798?&signup=true#_=_



Financial Information – Estimated Costs

| | |
|---|-----------------|
| New PK-6 School (includes abatement & demolition) | = \$ 86,028,762 |
| Renovate Tiger Stadium | = \$ 4,500,000 |
| Renovate Girls' Softball Field | = \$ 300,000 |
| Relocate JV/9th Grade Baseball Field to RBC Campus | = \$ 350,000 |
| Relocate Girls' Practice Soccer Field to RBC Campus | = \$ 150,000 |
| Relocate Varsity Baseball Field to THS Campus | = \$ 1,500,000 |
| Contingency | = \$ 1,721,238 |
| Subtotal: | = \$ 94,550,000 |



Financial Information – Estimated Costs

Subtotal: = \$ 94,550,000

Additional Work:

Site work at new PK-6 elementary school campus = \$ 1,200,000

RBC: Roof replacement over gymnasium = \$ 1,250,000

Grand Total: = \$ 97,000,000

**Eligible for co-funding by the OFCC at 17% for new
PK-6 elementary school**

Anticipated OFCC Contribution = \$ 14,884,034



Financial Information – Original Bond

- **\$107,000,000**
- **4.27 mills**
- **Maximum Term: 36 years**
- **Estimated Interest Rate: 5.00%**
- **Estimated Annual Cost to Property Owners: \$149**
per \$100,000 of appraised property value



Financial Information – May 2025 Bond Levy

- **\$97,000,000**
- **3.84 mills**
- **Maximum Term: 36 years**
- **Estimated Interest Rate: 5.00%**
- **Estimated Annual Cost to Property Owners: \$135**
per \$100,000 of appraised property value



A Few Examples:

(Based upon information on the Summit County website)

**A 2 bedroom, 1.5 bath condo
in the City of
Twinsburg**

**Selling price in Dec. 2024
= \$185,000**

**Appraised value by Summit
County
= \$140,600**

**A 3 bedroom, 1 bathroom
house in Twinsburg Township**

**Selling price in Jan. 2025
= \$230,000**

**Appraised value by Summit
County
= \$161,510**

**Estimated Bond cost
= \$218/year or \$18/month**

**A 3 bedroom, 1.5 bathroom
house in the City of
Reminderville**

**Selling price in Jan. 2025
= \$310,000**

**Appraised value by Summit
County
= \$293,350**

**Estimated Bond cost
= \$396/year or \$33/month**

**Estimated Bond cost
= \$100/year or \$8/month**



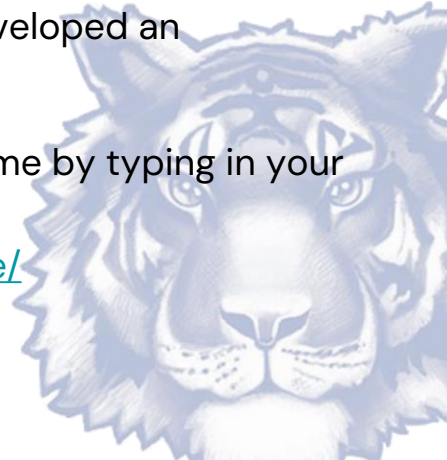
Election Date: May 6, 2025

Calculate Estimated Tax Increase Associated with Issue

On the May 6th ballot, Issue ___ is the Twinsburg City School District's Bond levy which supports the Tiger Legacy Project. In an effort to provide factual information, we have developed an Estimated Tax Calculator associated with this Bond levy.

You can calculate the estimated tax increase for the appraised value of your home by typing in your address at the following link:

<https://experience.arcgis.com/experience/1c5b01221251495fb46b19e28983337e/>



Election Date: May 6, 2025

For more details, visit For more information, visit
<https://www.twinsburg.k12.oh.us/TigerLegacyProject.asp>

